

## PROJECT PROFILE | SEAWATCH CONDOMINIUMS, HULL, MASSACHUSETTS

### ARCHITECT

KBA Architects  
Boston, Massachusetts

### CONTRACTOR

Advanced Metal Systems Corporation, Holliston, MA

### VAPROSHIELD REPRESENTATIVE

Bob McEachern  
Roof Tech Sales  
P.O. BOX 395  
Hampstead, NH 03841

### PRODUCT(S)

**WALLSHIELD®**

### PROJECT DESCRIPTION

Located 3000 feet from Nantasket Beach in Hull, Massachusetts, Seawatch Condominiums owners were dealing with an aging building that was succumbing wind, moisture intrusion and a failed façade. Built in the 1980's the EIFS\* were cracked and leaking. To improve the overall performance and aesthetics of the building, the owners decided to re-clad the building and utilize Rain Screen design technology.

Rain screen design is an alternative, superior method for building envelope construction, preventing the damaging effects of moisture intrusion and entrapment. The strength of the technology is the use of a breathable building membrane. WallShield, with its unmatched water holdout properties and its breathability made it a perfect fit for the project. In addition to the refurbishment, the residents needed to remain in their units. Upon installation of 30,000 square feet of WallShield, the building was secure, residents remained safe within, insulation was added and the future performance of the building ensured for years to come.

\*Exterior Insulation and Finish Systems: a type of building product that provides exterior walls with an insulated finished surface, and waterproofing in an integrated composite material system

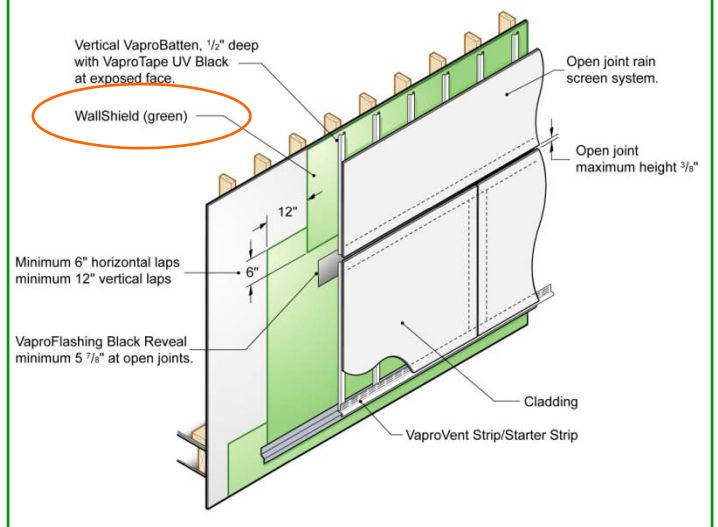
### ENVIRONMENTAL IMPACT

VaproShield products were designed with nature and the built environment in mind. WallShield is constructed from a three-layer, spun bonded polypropylene fabric; it is inert and can be recycled into its original bead form for reuse in other manufacturing processes.



**WALLSHIELD** is a Weather Resistive Vapor and Air Permeable Membrane. Its unique construction allows moisture to filter through to the exterior of the building during and after construction and occupancy.

### INSTALLATION APPLICATION DRAWING



### THIRD-PARTY TESTING

